



Sexuality and Morality in Victorian Times



Rebecca Bertrand

Leslie Wightman

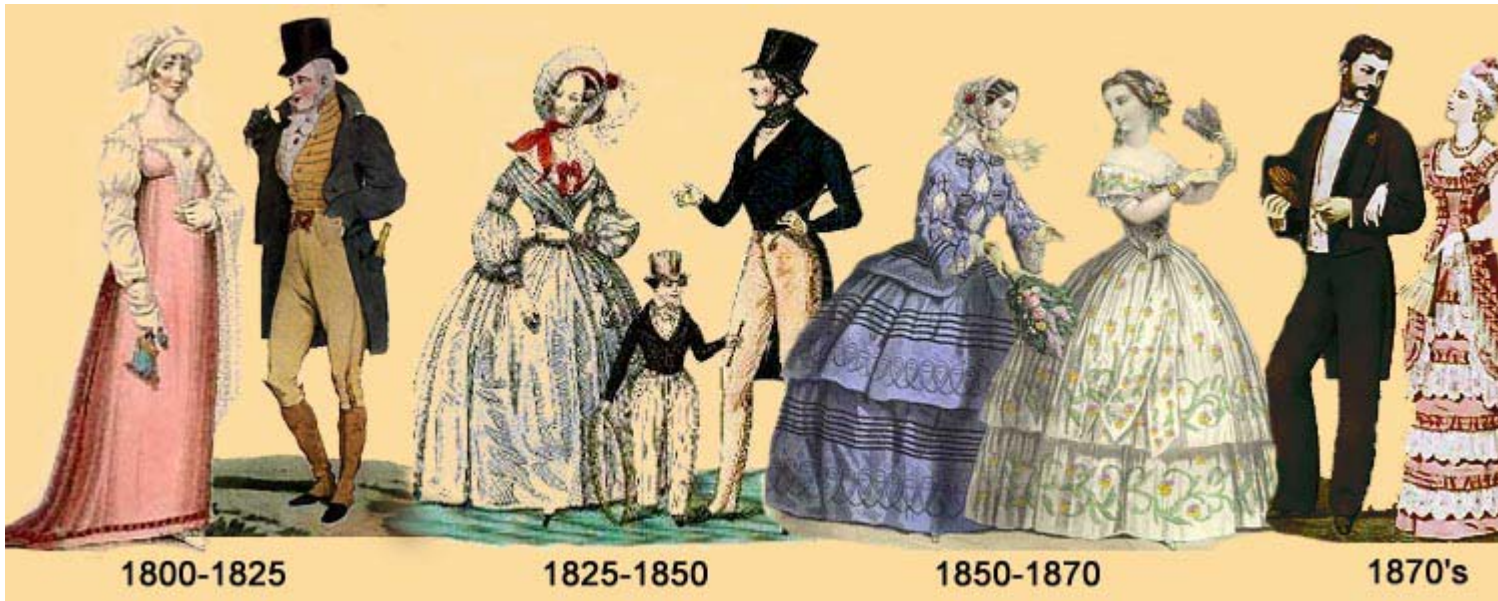
Religion

- ▶ Predominantly protestant
- ▶ Created “super” work ethic
- ▶ Distractions from work are evil



AAUGH! ANKLES!

- ▶ Conservative clothing
- ▶ Extreme sensitivity to anything relating to body parts
 - ▶ Legs/arms: limbs
 - ▶ Face: visage
- ▶ 'Lust' as deadly sin



Rules

- ▶ Cover piano legs
- ▶ A man may take two women on his arms, but a woman may not take two men
- ▶ A man must not smoke in the presence of a woman
- ▶ One must not remove their gloves when making a formal greeting
- ▶ No more than two vegetables per entree should be served
- ▶ Potatoes should not be served with fish



Overview

- ▶ Very religious
- ▶ Very conservative
- ▶ Very strict
- ▶ Expectations based on social hierarchy



Bibliography

- ▶ <http://thepopularfront.wordpress.com/2013/02/10/the-victorian-era-sexuality-and-the-family/>
- ▶ <http://language-dossier.webs.com/victorianslang.htm>
- ▶ <http://www.laura-cenicola.de/brithist2/brithist/8-1-introduction-into-victorian-morality-what-exactly-was-the-victorian-era.html>
- ▶ <http://www.suu.edu/faculty/ping/pdf/VictorianBritain.pdf>

